

(as of May 1, 2023)

Number of Students / Number of Staff

Number of Students

Undergraduate

Undergraduate School	Regular Students
College of Liberal Arts and Sciences	411
Faculty of Letters	760
Faculty of Law, Politics and Economics	1,572
Faculty of Education	1,629
Faculty of Science	875
Faculty of Engineering	2,753
Faculty of Horticulture	817
School of Medicine	716
Faculty of Pharmaceutical Sciences	475
School of Nursing	330
Total	10,338

Professional Graduate School

Professional Degree Program	Regular Students
Law School	68
Education	29
Total	97

Graduate

Graduate School	Regular Students	
	Master's Program	Doctoral Program
Humanities and Social Sciences	0	10
Humanities and Studies on Public Affairs	92	73
Education	136	0
Engineering	0	11
Advanced Integration Science	0	1
Science and Engineering	1,335	328
Horticulture	229	75
Medical and Pharmaceutical Sciences	154	610
Nursing	79	78
Graduate Degree Program of Global and Transdisciplinary Studies	9	0
Total	2,034	1,186

Number of Staff

(as of May 1, 2023)

	Executive Director	Faculty & Graduate	Center & Others	University Hospital	Library	Administrative Bureau & Area Administration Departments	Internal Audit Office	Total
President	1							1
Executive Vice President	7							7
Auditor	2							2
Sub Total	10							10
Professor		329	60	16				405
Associate Professor		266	56	13				335
Lecturer		63	24	34				121
Assistant Professor		174	65	159				398
Research Associates		4						4
Sub Total		836	205	222				1,263
Research Fellows		9	25	7				41
Attached School Teachers		97						97
Medical Staff		1	4	1,390				1,395
Admin. Staff		21	18	168	24	519	3	753
Sub Total		128	47	1,565	24	519	3	2,286
Total	10	964	252	1,787	24	519	3	3,559

International Student Enrollment

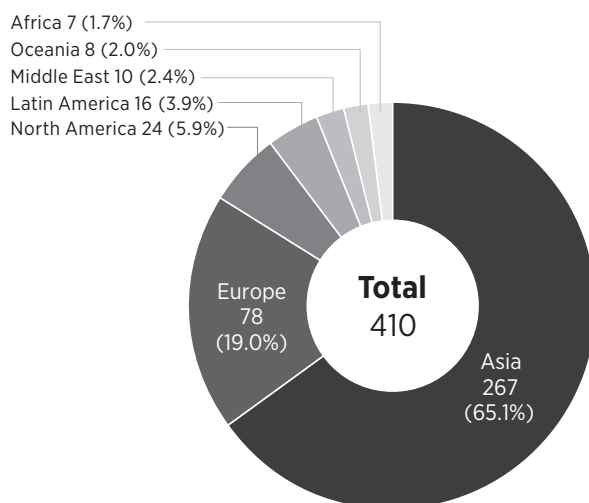
Region	Countries / Area	Undergraduate	Master's Program	Doctoral Program	Others	Total
ASIA	Bangladesh	1		5 (3)	1 (1)	7 (4)
	Brunei				1	1 (0)
	Cambodia		2		4	6 (0)
	China	73	243	264 (9)	186 (3)	766 (12)
	Hong Kong	2 (2)			3 (1)	5 (3)
	India	1 (1)		4 (2)	12	17 (3)
	Indonesia	2 (2)	15 (11)	27 (15)	31 (6)	75 (34)
	Korea	56 (16)	14	11	38 (1)	119 (17)
	Laos				2	2 (0)
	Malaysia	2	2	2 (1)	3 (1)	9 (2)
	Mongolia	3 (3)		1	1 (1)	5 (4)
	Myanmar		1 (1)	7 (3)	4 (2)	12 (6)
	Nepal			1		1 (0)
	North Korea	1				1 (0)
	Philippines		1	2 (1)	9	12 (1)
	Singapore				1	1 (0)
	Sri Lanka				1 (1)	1 (1)
	Taiwan	2	1	9	74	86 (0)
	Thailand		15 (11)	13 (3)	37 (2)	65 (16)
	Timor-Leste				2	2 (0)
Vietnam		2 (1)	1 (1)	13	16 (2)	
MIDDLE EAST	Iran				1	1 (0)
	Israel			1		1 (0)
	Jordan			1		1 (0)
	Oman				1	1 (0)
	Pakistan				1	1 (0)
	Syria			1		1 (0)
	Turkey		1 (1)	2 (1)	10	13 (2)
	Yemen				1 (1)	1 (1)
AFRICA	Benin				1 (1)	1 (1)
	Botswana				1 (1)	1 (1)
	Burkina Faso			1		1 (0)
	Ethiopia			1		1 (0)
	Kenya			1	1 (1)	2 (1)
	Namibia			1		1 (0)
	Nigeria		1	2	1	4 (0)
	Rwanda				1 (1)	1 (1)
Zimbabwe			1	1 (1)	2 (1)	
OCEANIA	Australia				2	2 (0)
NORTH AMERICA	Canada				2	2 (0)
	U.S.A				258	258 (0)
LATIN AMERICA	Argentina			1 (1)		1 (1)
	Brazil	1	1 (1)	2 (1)	3 (3)	7 (5)
	Costa Rica		1 (1)	1 (1)	1 (1)	3 (3)
	Cuba			1 (1)		1 (1)
	El Salvador			1		1 (0)
	Guatemala		1 (1)		1 (1)	2 (2)
	Mexico		1 (1)	1	11	13 (1)
	Panama			1 (1)	1	2 (1)
Venezuela				1	1 (0)	
EUROPE	Belgium				1	1 (0)
	Croatia				1 (1)	1 (1)
	Cyprus				1	1 (0)
	Denmark			1		1 (0)
	Finland				8	8 (0)
	France			1	12	13 (0)
	Germany		2		36	38 (0)
	Italy				16	16 (0)
	Kazakhstan				1	1 (0)
	Kosovo		1			1 (0)
	Netherlands				3	3 (0)
	Norway				1	1 (0)
	Poland				1 (1)	1 (1)
	Portugal				2	2 (0)
	Russia		1 (1)		5 (1)	6 (2)
	Spain				4	4 (0)
	Sweden				2	2 (0)
	Switzerland				1	1 (0)
	U.K.				8	8 (0)
	Ukraine	1 (1)			1	2 (1)
total		145 (25)	306 (30)	369 (44)	827 (33)	1,647 (132)

() shows the number of international students funded by Ministry of Education, Culture, Sports, Science and Technology of Japan

International Researcher Exchange

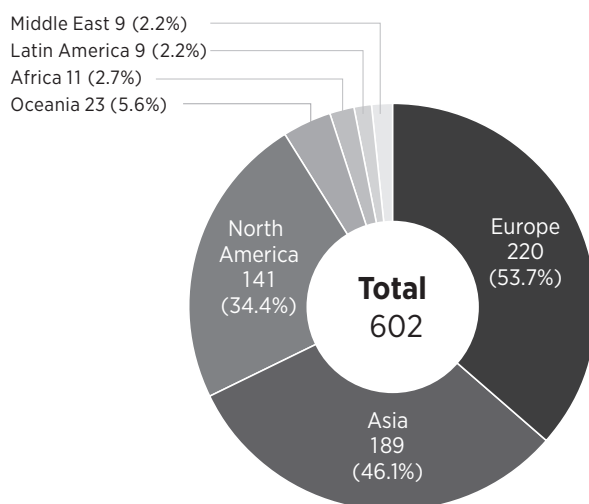
International Researchers at Chiba University

Asia	267
Europe	78
North America	24
Latin America	16
Middle East	10
Oceania	8
Africa	7
Total	410



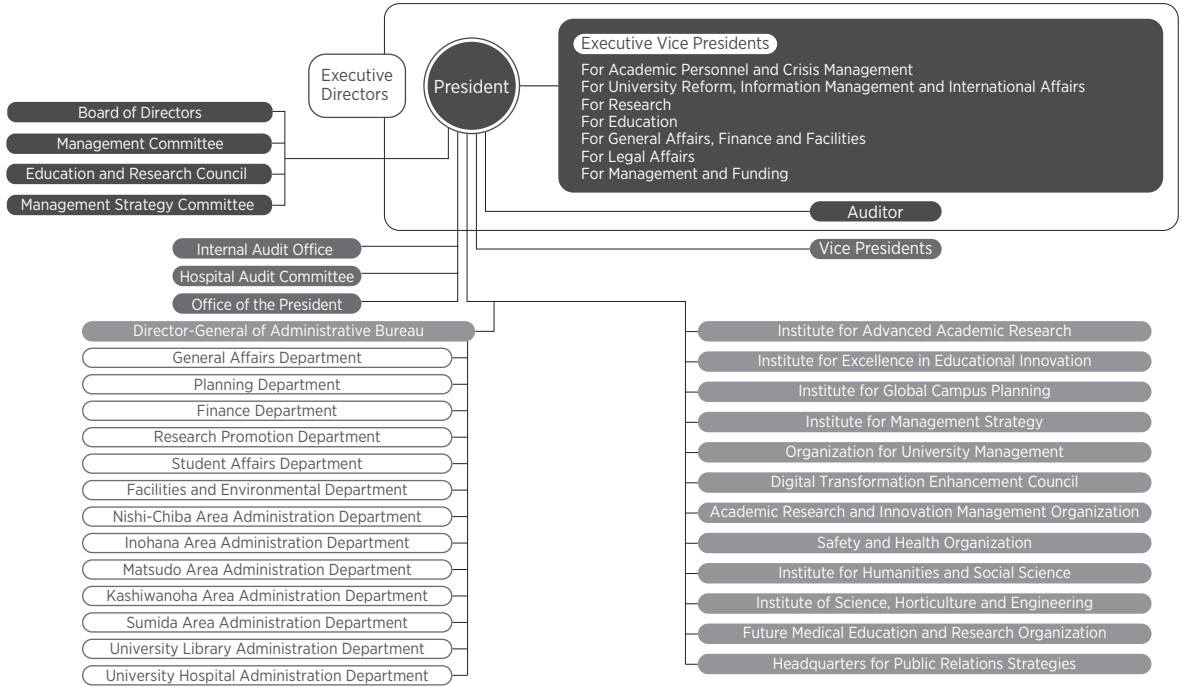
Chiba Univ. Researchers Going Abroad

Europe	220
Asia	189
North America	141
Oceania	23
Africa	11
Latin America	9
Middle East	9
Total	602

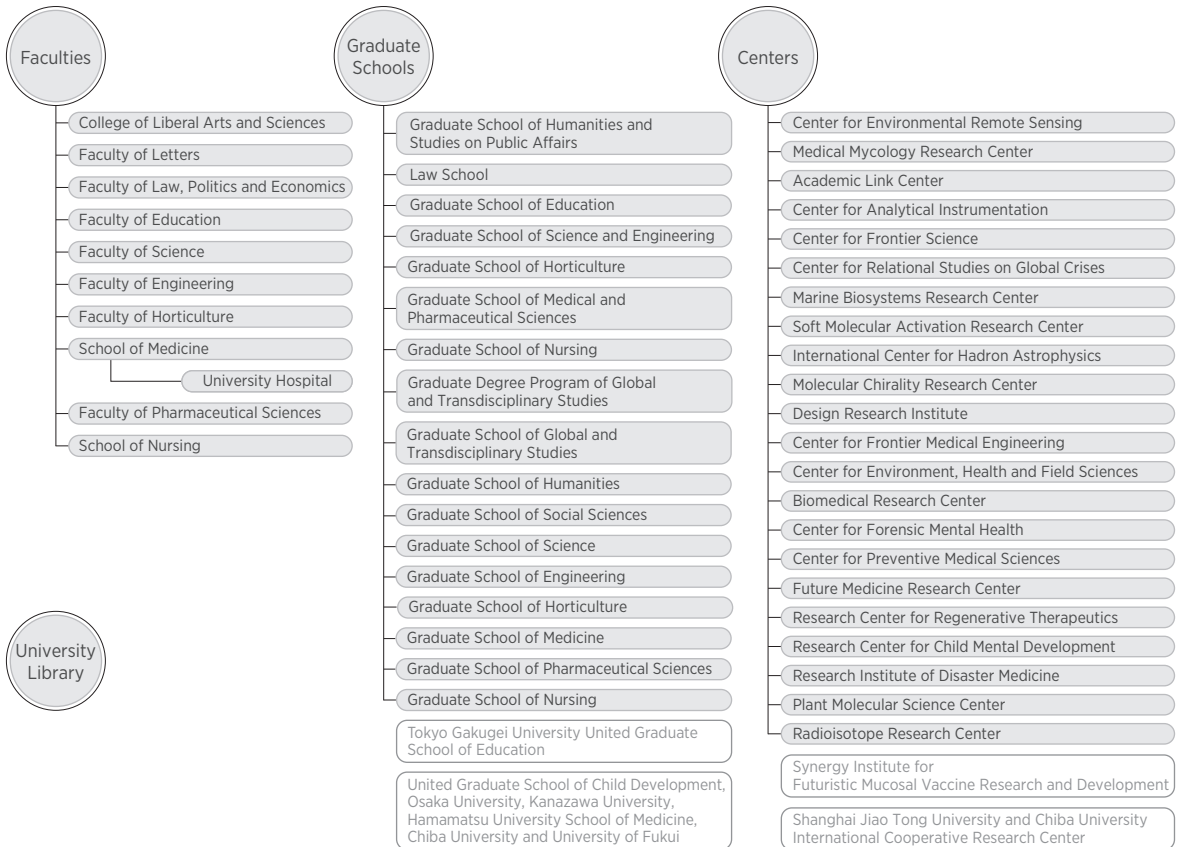


Organization Chart

Management Organization



Education and Research Organization



Administrative Staff

Executive Directors

President	NAKAYAMA Toshinori
Executive Vice President for Academic Personnel and Crisis Management	NAKAYA Haruaki
Executive Vice President for University Reform, Information Management and International Affairs	WATANABE Makoto
Executive Vice President for Research	FUJIE Koichi
Executive Vice President for Education	OZAWA Hiroaki
Executive Vice President for General Affairs, Finance and Facilities / Director-General of Administrative Bureau	MARUYAMA Hiroshi
Executive Vice President for Legal Affairs	HORI Yutaka
Executive Vice President for Management and Funding	IWASAKI Toshihiro
Auditor	SUMIKURA Eiji
Auditor (External)	YAMAMOTO Tomoko

Executive Vice President

for Operations	YONEMURA Chiyo
----------------	----------------

Vice Presidents

for Educational Reform and Support	TAKEUCHI Hirooya
for Education, Student and International Affairs	YOSHINO Aya
for Education and Academic-Industrial Collaboration	YAMADA Masaru
for Admissions	SATO Satoshi
for Research	SAITO Tetsuichiro
for Research	YANAGISAWA Akira
for Research and Academic-Industrial Collaboration	TAKEI Masahiro
for Research and Regional Cooperation	MATSUOKA Nobuhiro
for Management and Funding	OHTORI Seiji
for University Hospital	YOKOTE Koutaro
for Affiliated Schools	KOMIYAMA Tomoyoshi
for Public Relations, Harassment Prevention and Response	SUWA Sayuri

Deans

College of Liberal Arts and Sciences/Graduate School of Global and Transdisciplinary Studies	WADA Ken
Faculty of Letters / Graduate School of Humanities	UCHIYAMA Naoki
Faculty of Law, Politics and Economics / Graduate School of Social Sciences	KOBAYASHI Masaya
Faculty of Education / Graduate School of Education	FUJIKAWA Daisuke
Faculty of Science / Graduate School of Science and Engineering / Graduate School of Science	SATO Toshinori
Faculty of Engineering / Graduate School of Engineering	ITO Tomoyoshi
Faculty of Horticulture / Graduate School of Horticulture	MATSUOKA Nobuhiro
School of Medicine / Graduate School of Medicine	MIKI Takashi
Faculty of Pharmaceutical Sciences / Graduate School of Pharmaceutical Sciences	MORIBE Kunikazu
School of Nursing / Graduate School of Nursing	SUWA Sayuri
Graduate School of Humanities and Studies on Public Affairs	OGIYAMA Masahiro
Law School	KOBAYASHI Toshiaki
Graduate School of Medical and Pharmaceutical Sciences	OGRA Yasumitsu

Chair of Graduate Program

Graduate Degree Program of Global and Transdisciplinary Studies	KAMISATO Tatsuhiro
---	--------------------

Directors

University Library / Academic Link Center	TAKEUCHI Hiroya
University Hospital	YOKOTE Koutaro
Center for Environmental Remote Sensing	HATTORI Katsumi
Medical Mycology Research Center	SASAGAWA Chihiro
Center for Analytical Instrumentation	NISHIDA Atsushi
Center for Frontier Science	MATSUURA Akira
Center for Relational Studies on Global Crises	SAKAI Keiko
Marine Biosystems Research Center	TOGASHI Tatsuya
Soft Molecular Activation Research Center	ARAI Takayoshi
International Center for Hadron Astrophysics	YOSHIDA Shigeru
Molecular Chirality Research Center	OMATSU Takashige
Design Research Institute	UEDA Akira
Center for Frontier Medical Engineering	HANEISHI Hideaki
Center for Environment, Health and Field Sciences	TAKAGAKI Michiko
Biomedical Research Center	KOSEKI Haruhiko
Center for Forensic Mental Health	IYO Masaomi
Center for Preventive Medical Sciences	MORI Chisato
Future Medicine Research Center	HANAOKA Hideki
Research Center for Regenerative Therapeutics	MOTOHASHI Shinichiro
Research Center for Child Mental Development	SHIMIZU Eiji
Research Institute of Disaster Medicine	TANAKA Tomoaki
Plant Molecular Science Center	YAMAZAKI Mami
Radioisotope Research Center	UEHARA Tomoya
Synergy Institute for Futuristic Mucosal Vaccine Research and Development	KIYONO Hiroshi
Shanghai Jiao Tong University and Chiba University / International Cooperative Research Center	LIU Hao